

iQ-FoV Box

Measure the resolution for a wide field of view camera

The iQ-FoV Box is a chart illumination positioning system that can be optimized for resolution measurements up to a viewing angle of 180 degrees. Adjust and position the test charts to minimize distortion and adapt to the angle of your camera lens.

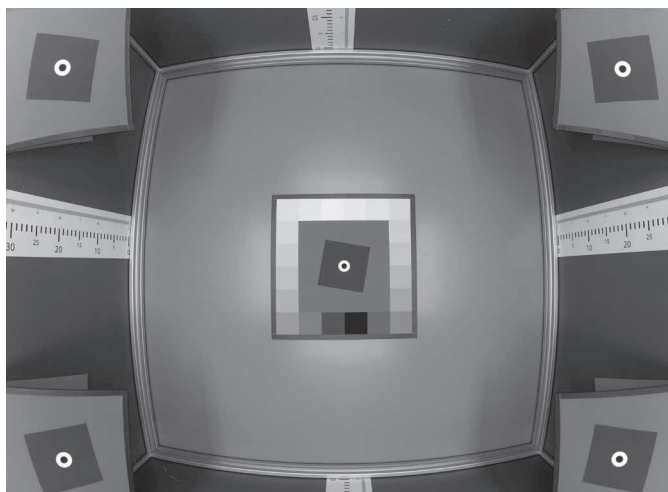
Main Features

- * High FoV resolution measurements
- * Adjustable test charts
- * Easy camera alignment
- * Various opening angles
- * Dimmable illumination system
- * Create low light situations



Product control

The test charts are magnetic allowing for easy adjustment and positioning depending on the viewing angle of the camera lens. The camera positioning for height and depth is remotely controlled by changing the pitch, yaw, and roll.



iQ-FoV Box interior with measurement scales

At a Glance	iQ-FoV Box
Principle	Test box for high field of view cameras
Light source	8 x 18 W 950 fluorescent tubes/ dimable D50
Extension arm travel range (depth/ height)	75 cm / 15 cm
Rotation range	Pitch: +/- 15 Deg. Yaw: +/-170 Deg. (motorized adjustable via remote control)
Rotation range roll	+/- 10 degrees (manually adjustable)